



stephengeoffrey

202



stephengeoffrey

332



stephengeoffrey

720

Destination Collection

Style 202

Alfresco 2-Button

w/ Abboud Windsor Tie

Style 332

Grey Savoy 2-Button Tuxedo

w/ Microfiber Formal Shirt,
Tango Fullback Vest,
and Striped Windsor Tie

Style 720

White Notch 2-Button Tuxedo

w/ Microfiber Formal Shirt,
Aries Fullback Vest, and
Abboud Windsor Tie



stephengeoffrey

772



Calvin Klein

922



900/800/700

Style 772

Contender 2-Button Tuxedo

w/ Microfiber Formal Shirt,
Contender Fullback Vest,
and Aries Striped Windsor Tie

Style 922

Aston 2-Button Tuxedo

w/ Abboud Fullback Vest
and Abboud Windsor Tie

NEW!

Style 900/800/700

Flat Front Formal Trousers

available in Black Super 100's Wool
(900); Black Burlington Wool (800)
and White Polyester (700)



CLUB MAXIM

403



stephengeoffrey

202



stephengeoffrey

302

Suit Collection

The suits in our Suit Collection are ideal for any event when a suit is required. Mix and match with your choice of shirts, ties and trousers!

Style 403

Black Business Suit

Style 202

Alfresco Suit

Style 302

Midnight Blue Suit

Fullback Vests

Due to limitations in the printing process, the color swatches below are only representative of the colors offered in each vest collection. For accurate color, visit your Jim's Formal Wear Retailer. Actual fabric swatches are featured in the Jim's Formal Wear Catalog. Pattern details may also be seen at jimsformalwear.com.

TANGO by Jean Yves | Fullback Vests / Bow Ties / Striped Windsor Ties / Solid Windsor Ties / Pocket Squares



42 Colors Available:

Black	Gold	Bali Peach	Ferrari Red	Midnight Blue
Charcoal	Champagne Tan	Capri Coral	Capri Red	Teal
Bali Silver	Latte	Petal Pink	Wine	Rio Turquoise
Platinum	Harvest Gold	Tea Rose	Eggplant	Pool
Pure White	Chocolate	Bubblegum Pink	Bali Lavender	Honey Dew
Diamond White	Dark Cinnamon	Fuchsia	Powder Blue	Capri Mint
Premier Ivory	Cinnamon	Bright Pink	Bali Blue	Celedon
Capri Buttercup	Persimmon	Watermelon	Cornflower	Clover
			Royal Blue	Emerald Green

FUSION by Jean Yves | Fullback Vests / Bow Ties / Striped Windsor Ties / Solid Windsor Ties / Paisley Windsor Ties / Pocket Squares - NEW COLORS ADDED!



28 Colors Available:

Silver	Claret	Purple	Teal
Black	Ferrari Red	Lapis	Jade
White	Sangria	Midnight Blue	Olive
Diamond White	Bright Fuchsia	Marine Blue	Clover
Capri Buttercup	Petunia	Cornflower	
Latte	Coral	Turquoise	
Chocolate	Spice Red	Pool	
Wine	Violet	Mermaid	

ALLURE by Jean Yves | Fullback Vests / Bow Ties / Striped Windsor Ties / Solid Windsor Ties / Pocket Squares - NEW!



18 Colors Available:

Platinum	Watermelon	Emerald
Black	Ferrari Red	Apple Green
White	Claret	
Light Ivory	Rum Raisin	
Bright Yellow	Capri Grape	
Mocha	Blue Velvet	
Orange Crush	Malibu	
Fuchsia	Riviera Teal	

WE ARE EXPERTS AT SERVICING YOUR OUT-OF-TOWN GROOMSMEN!

Are your groomsmen located in different cities across the country and coming into town just before the wedding? Don't worry, we can easily coordinate your gentlemen's tuxedos. See a store associate to learn about the simple process.

Fullback Vests

COOPER by Jean Yves | Fullback Vests / Bow Ties / Striped Windsor Ties / Solid Windsor Ties / Pocket Squares

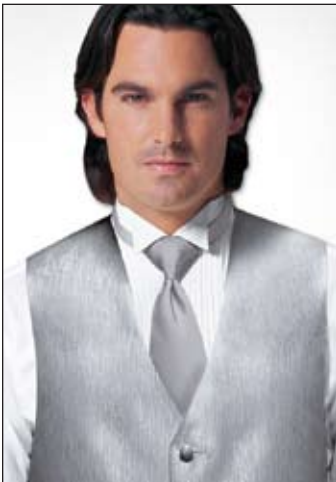


19 Colors Available:

- | | | |
|-----------|---------------|--------------|
| Silver | Burnt Orange | Turquoise |
| Black | Capri Coral | Riviera Teal |
| White | Light Fuchsia | Kiwi |
| Ivory | Ferrari Red | |
| Citron | Claret Red | |
| Gold | Grape | |
| Sand | Royal Blue | |
| Chocolate | Tiffany Blue | |

ONYX by Jean Yves

Fullback Vests / Bow Ties / Windsor Ties
Pocket Squares



16 Colors Available:

- | | |
|-----------------|---------------|
| Royal Blue | Petal Pink |
| Aubergine | Bali Lavender |
| Burgandy Port | Bubblegum |
| Bali Silver | Powder Blue |
| Victorian Lilac | Capri Coral |
| Fuchsia | Pure White |
| Capri Red | Premier Ivory |
| Celedon | Black |

ARIES by After Six

Fullback Vests / Bow Ties / Ascots
Pocket Squares



8 Colors Available:

- | |
|------------|
| Claret Red |
| Pink |
| Lavender |
| Platinum |
| Ice |
| White |
| Ivory |
| Black |

Aries Fullback Vests also coordinate with Aries Striped Windsor Ties!

SPECTRUM by Brandon Michael

Fullback Vests / Bow Ties
Sharpei Windsor Ties / Pocket Squares



10 Colors Available:

- | | |
|-------------|-------|
| Red | Ecru |
| Champagne | Black |
| Silver | |
| Sage | |
| Periwinkle | |
| Powder Blue | |
| Turquoise | |
| White | |

FIND YOUR COLOR
from 280 Tie Styles & 150 Fullback Vests!

Nothing brings the look and theme of your wedding together like matching colors. When coordinating the men's tuxedos with your bridesmaids' dresses, you'll want to have as many choices as possible. Our extensive selection of fullback vest and tie colors makes mixing and matching easy.



See literally hundreds of fabric swatches in our catalog!

Visit our store to see our Tuxedo and Accessory Collection catalogs. **They are filled with colorful fabric swatches that will ensure your color choices are accurate.** You'll be amazed at the huge selection!

Tie Options

ENERGY Windsor Ties

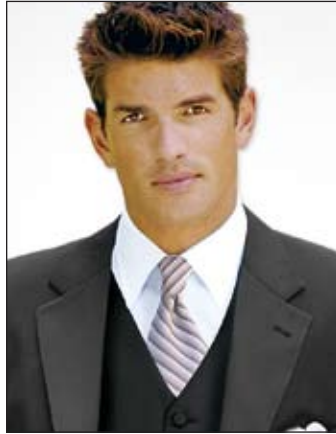


Multi-shaded, circle-pattern windsor ties and pocket squares; very versatile, makes coordinating dress colors easy!

17 Colors Available:

	Silver		Coral
	Black		Bubblegum
	White		Claret Red
	Ivory		Purple
	Lemon		Royal Blue
	Praline		Dark Teal
	Brown		Turquoise
	Cinnamon		Lime
	Mandarin		

ABBOUD Windsor Ties



Multi-shaded, striped windsor ties and pocket squares; coordinates with a 5-button black satin fullback vest - specify JFW code ABBL

11 Colors Available:

	Platinum Silver		Ivory
	Mercury Black		White
	Red		Pink
	Sapphire Blue		Turquoise
	Gold		Palomino Brown
	Ice		

ARIES Striped Windsor Ties



Coordinates with Aries Fullback Vests and pocket squares

7 Colors Available:

	Platinum		Ice
	Chocolate		Pink
	Claret Red		Lavender
	White		

SOLID Windsor Ties



We Have Your Color!
Choose from over 60 Solid Windsor Ties to coordinate with any of these

Fullback Vest Collections:

TANGO
FUSION
ALLURE
COOPER

Pocket Squares

Don't be caught without a pocket square! It's the perfect accessory item to add a splash of color to your tuxedo. Nearly every vest we offer has a pocket square to match its pattern and color.



Formal Shirts



White Microfiber Shirt

Non-pleated front and barrel cuff; tailored of ultra-soft microfiber fabric
Available in White, Ivory and Black



Laydown Collar Formal Shirt

With 1/4" pleats and barrel cuff
Available in White and Ivory



Wing Collar Formal Shirt

With 1/4" pleats and barrel cuff
Available in White and Ivory



Pique' Wing Collar Formal Shirt

With pique' front and barrel cuff; worn with coordinating bow tie and vest; for 'White Tie' evening events

Unique Items



Mossy Oak Camouflage Vest and Ties

Fullback Vest; accessorize with a matching bow tie, windsor tie and pocket square; perfect for the outdoor enthusiast!

Mossy Oak New Break-Up Pattern is a licensed trademark of Haas Outdoors - copyright 2010



Jean Yves Tango Hats, Hat Bands and Scarves

Ideal for wedding receptions, proms and quinceaneras
Available in 13 colors



Fedora Hats

Ideal for wedding receptions, proms and quinceaneras
Available in Black with White Band and White with Black Band

Toddler Tuxedos



Toddler Tux

Available in infant sizes 1-2; 100% polyester; includes coat, pant, shirt, vest and tie; machine-washable; for purchase only



Toddler Tails

Available in infant sizes 1-2; 100% polyester; includes coat, pant, shirt, cummerbund and tie; machine-washable; for purchase only

Formal Shoes

The Comfort Shoe:

Our Most Comfortable Formal Shoe Ever!



Black Comfort Shoe (BCS)



Cushioned Outsole
The soft rubber outsole guarantees comfort for those long formal events.



Padded Insole
A soft, thick, padded insole puts a buffer between the pressure points on your foot and the rubber outsole.

Blucher Styling
The blucher styling does not constrict your foot. Flexibility across the top of your foot is maximized.

Square Toe Design
The square toe design provides more room for your toes.



Protocol Snakeskin (BSS)



Tone-on-Tone Cap Toe (BCT)



Black and White Cap Toe (BWC)



Ivory Square Toe Blucher (IST)



White Square Toe Blucher (WST)



Black Calfskin Lace (BCL)



Chocolate Calfskin Lace (CCL)



Black Square Toe Blucher (BST)